

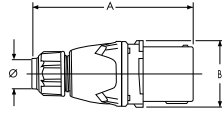


# Dimensions

## Inlet – Provided in inches and millimeters

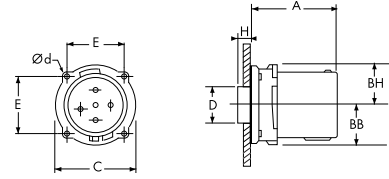
Dimensions are for reference only

### Plug



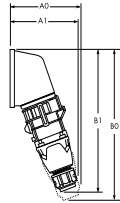
PRODUCT	A	B	Ø
	7.6	3.11	.32-1.25
DB30	193	79	8-32
	7.95	3.9	.55-1.53
DB60	202	99	14-39
	12.01	4.33	1.25-1.812
DB100	305	110	32-46

### Inlet



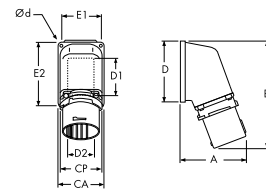
PRODUCT	A	BB	BH	C	D	E	H	Ød
	3.82	1.5	1.61	3.07	2.17	2.17	0.71	0.18
DB30	97	38	41	78	55	55.1	18	4.5
	3.9	1.77	2.13	3.58	2.68	2.59	0.83	0.22
DB60	99	45	54	91	68	65.8	21	5.5
	4.74	2.09	2.24	4.53	3.35	3.2	1.61	0.22
DB100	120.4	53	57	115	85	81.3	41	5.5

### 70° inclined inlet/angle with connector on/off



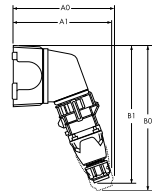
PRODUCT	A1	A0	B1	B0
	6.02	6.57	11.54	12.99
DB30	153	167	293	330
	6.85	7.36	13.46	14.88
DB60	174	187	342	378
	8.62	9.41	17.60	19.80
DB100	219	239	447	503

### 70° inlet/angle



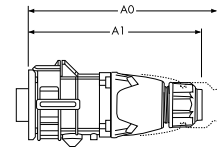
PRODUCT	A	B	CA	CP	D	D1	D2	E1	E2	Ød
	4.61	7.28	3.03	3.07	4.17	3.15	2.56	2.48	3.74	0.22
DB30	117	185	77	78	106	80	65	63	95	5.5
	5.35	8.74	4.02	3.58	5.35	4.53	3.15	3.44	4.8	0.26
DB60	136	222	102	91	136	115	80	87.3	122	6.5
	6.42	9.88	5.51	5.75	5.51	4.92	3.94	4.87	4.87	0.26
DB100	163	251	140	146	140	125	100	123.8	123.8	6.5

### 70° inclined inlet/angle/junction box with connector on/off



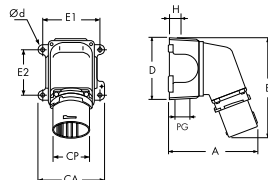
PRODUCT	A1	A0	B1	B0
	8.54	9.06	11.65	13.15
DB30	217	230	296	334
	9.96	10.47	13.66	15.08
DB60	253	266	347	383
	12.24	13.03	17.60	19.80
DB100	311	331	447	503

### inlet with connector on/off



PRODUCT	A1	A0
	8.39	9.96
DB30	213	253
	9.02	10.51
DB60	229	267
	13.23	15.59
DB100	336	396

### 70° surface inlet/angle/ metal junction box



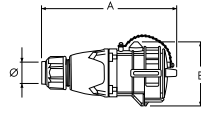
PRODUCT	A	B	CA	CP	D	E1	E2	H	PG	Ød
	7.09	7.4	4.33	3.07	4.61	3.70	2.78	1.18	0.83	0.25
DB30	180	188	110	78	117	94	70.6	30	21	6.4
	8.43	8.94	5.71	3.58	5.71	4.92	3.82	1.57	1.14	0.31
DB60	214	227	145	91	145	125	97	40	29	7.8
	10.04	9.88	7.48	5.75	5.51	6.69	4.24	1.93	1.42	0.31
DB100	255	251	190	146	140	170	107.7	49	36	7.8

# Dimensions

## Receptacle – Provided in inches and millimeters

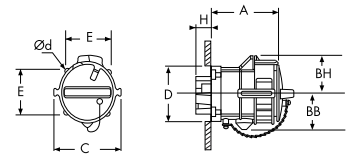
Dimensions are for reference only

### connector



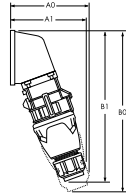
PRODUCT	A	B	Ø
	7.99	3.54	.32-1.25
DB30	203	90	8-32
	8.82	4.02	.55-1.53
DB60	224	102	14-39
	12.56	4.92	1.25-1.812
DB100	319	125	32-46

### receptacle



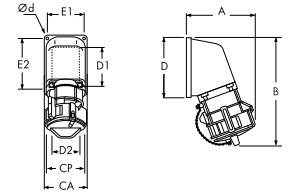
PRODUCT	A	BB	BH	C	D	E	H	Ød
	4.21	1.77	1.77	4.33	2.17	2.17	1.02	0.18
DB30	106.9	45	45	110	55	55.1	26	4.5
	4.75	2.01	2.01	4.88	2.68	2.59	1.26	0.22
DB60	120.7	51	51	124	68	65.8	32	5.5
	5.28	2.46	2.46	5.75	3.35	3.20	1.65	0.22
DB100	134.2	62.5	62.5	146	85	81.3	42	5.5

### 70° inclined receptacle/angle with plug on/off



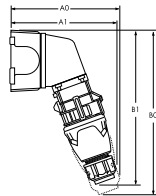
PRODUCT	A1	A0	B1	B0
	6.02	6.57	11.54	12.99
DB30	153	167	293	330
	6.85	7.36	13.46	14.88
DB60	174	187	342	378
	8.62	9.41	17.60	19.80
DB100	219	239	447	503

### 70° receptacle/angle



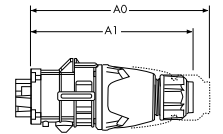
PRODUCT	A	B	CA	CP	D	D1	D2	E1	E2	Ød
	5.24	7.83	3.03	4.33	4.17	3.15	2.56	2.48	3.74	0.22
DB30	133	199	77	110	106	80	65	63	95	5.5
	6.10	9.72	4.02	4.88	5.35	4.53	3.15	3.44	4.80	0.26
DB60	155	247	102	124	136	115	80	87.3	122	6.5
	7.13	10.55	5.51	5.75	5.51	4.92	3.94	4.87	4.87	0.26
DB100	181	268	140	146	140	125	100	123.8	123.8	6.5

### 70° inclined receptacle/angle junction box with plug on/off



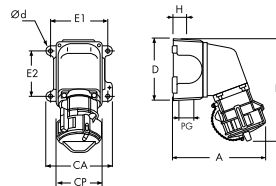
PRODUCT	A1	A0	B1	B0
	8.54	9.06	11.65	13.15
DB30	217	230	296	334
	9.96	10.47	13.66	15.08
DB60	253	266	347	383
	12.24	13.03	17.60	19.80
DB100	311	331	447	503

### receptacle with plug on/off



PRODUCT	A1	A0
	8.39	9.96
DB30	213	253
	9.02	10.51
DB60	229	267
	13.23	15.59
DB100	336	396

### 70° receptacle/angle metal junction box



PRODUCT	A	B	CA	CP	D	E1	E2	H	PG	Ød
	7.72	7.95	3.31	4.33	4.61	3.70	2.78	1.18	0.83	0.25
DB30	196	202	84	110	117	94	70.6	30	21	6.4
	9.21	9.92	4.49	4.88	5.71	4.92	3.82	1.57	1.14	0.31
DB60	234	252	114	124	145	125	97	40	29	7.8
	10.75	10.55	5.51	5.75	5.51	6.69	4.24	1.93	1.42	0.31
DB100	273	268	140	146	140	170	107.7	49	36	7.8